

Quick User Guide

SOUND4 VOICE ULA

3-Band Voice Processor
2/4/8 channels

→ **BEFORE YOU USE THIS PRODUCT** ←

In order to be able to enjoy all the benefits of owning your new SOUND4 product, please verify first that the latest software and firmware releases were installed.

Visit www.sound4.com/downloads for the most recent software and firmware downloads, prior the installation.

This Quick user guide will make the installation of SOUND4 quick and easy. Applying these principles, you can simplify the process and save yourself extra time and effort.

The screenshots used for the purposes of this manual, unless clearly indicated, are from SOUND4 VOICE ULA8. Please refer to the User manual for detailed information on how to configure and explore your device. We routinely release new versions to add features and fix bugs. Check the www.sound4.com web site for the latest information available.

STEP 1

Universal Installer

The Universal Products Installer is the complete installation kit for all SOUND4 Products. The program is provided free of charge and can be downloaded from www.sound4.com/downloads. Installation packages for MS Windows and Linux Ubuntu OS are available.

STEP 1.1

Windows users

Upon entering the section, click on and download Universal All Products Installer, additionally it is necessary to download Stream Extension, in order to add necessary encoders to the system. Once the process is completed install the .exe file. SOUND4's products are compatible with the Microsoft Windows Operating Systems listed below:

- Windows 7 - 32 & 64 bits
- Windows 8 - 32 & 64 bits
- Windows 10 - 32 & 64 bits
- Windows Server 2008 - R2
- Windows Server 2012
- Windows Server 2019 (except Core version)

IMPORTANT NOTE: Due to Microsoft security changes, your operating system must be up-to-date, if not SOUND4 Driver will be disabled by Operating System and you will be not able to run the SOUND4 Remote Control Software.

STEP 1.2

Linux Ubuntu OS

SOUND4 proposes you to install the software package under your own Ubuntu. Compatibility with Ubuntu distributions:

- Lucid Lynx - 10.04 LTS
- Precise Pangolin - 12.04 LTS
- Trusty Tahr - 14.04 LTS
- Xenial Xerus - 16.04 LTS
- Bionic Beaver – 18.04 LTS

Installation for a PC running compatible Ubuntu version:

- Click on the following link to add SOUND4 repository - www.sound4.biz/repository/ubuntu/sound4-repository.deb

If you also want to install:

- Install the driver with following link: apt://sound4exp1?refresh=yes
- Install the SOUND4 server with following link: apt://sound4server
- And to install SOUND4 Remote Control, please use the following link: apt://sound4remote

If you prefer to manage package installation by yourself, please follow the instructions below:

1. Add the following source to your Ubuntu repository list (example for lucid) - [deb http://www.sound4.biz/repository/ubuntu/lucid-non-free](http://deb.http://www.sound4.biz/repository/ubuntu/lucid-non-free)
2. Then get the SOUND4 GPG signature key - [wget -q http://www.sound4.biz/repository/sound4.gpg](http://wget-q.http://www.sound4.biz/repository/sound4.gpg) -O- | sudo apt-key add -
3. Install required packages - [sudo apt-get update && sudo apt-get install sound4exp1 sound4server sound4remote](http://sudo.apt-get.update&&sudo.apt-get.install.sound4exp1.sound4server.sound4remote)
4. Add the user to the audio group (needed for Alarm Stacker GUI) - [sudo adduser \\$USER audio](http://sudo.adduser.$USER.audio)
5. Log off and on to make the settings effective.

STEP 2

Connection

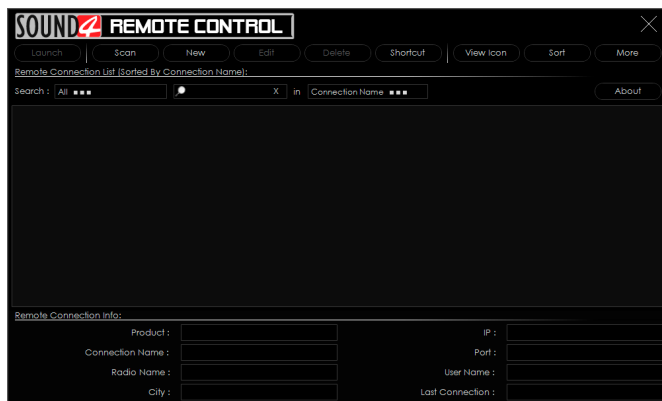
For the initial set-up of the device you will only need to do the following:

1. Take your new SOUND4 card out of the box, open your computer and insert the card into available PCI express slot. The card can be plugged into a full height PCI express slot type x1, x4, x8, x16.
2. Connect RJ45 network cable to the corresponding connector on the board in order for it to be properly integrated into your existing signal chain.



STEP 3

Software



Double click on the software will open the main control window. The Remote control software can maintain several devices at once. There are two options of adding a new device. Both are explained in details below.

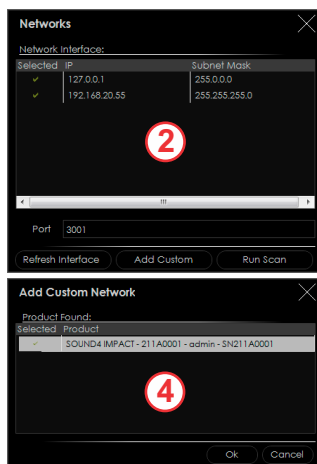
STEP 3.1

Scan interactive button

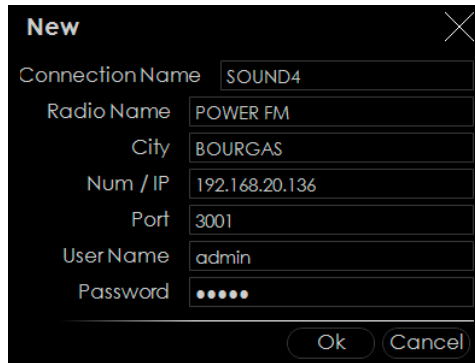
1. Press the [Scan] button;
2. A window with all network interfaces on the PC will appear. Select the IP address (the interface) on which the scan should be made, and press [Run Scan];
3. Wait until the scan is completed;



4. Upon completion, the Add Custom Network message will appear;
5. To add the device to the list, select the connection and press [OK];
6. The device will be added automatically (as depicted in **Step 3.2**). Double click on the icon will open the device's interface (**Step 3.3**). The default access credentials are user name: **admin** and password: **admin**



1. Press the [New] button.
2. A new screen requiring the following information will appear:

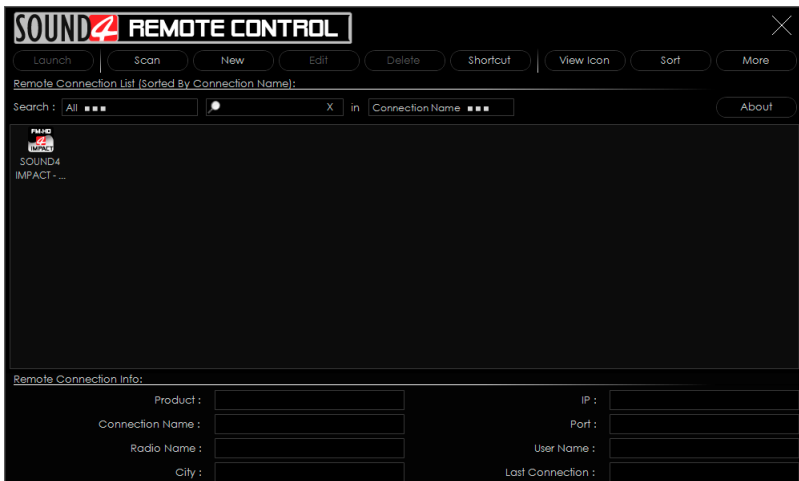


The 'New' dialog box is a black window with a white 'X' in the top right corner. It contains several text input fields with labels on the left and values on the right:

- Connection Name: SOUND4
- Radio Name: POWER FM
- City: BOURGAS
- Num / IP: 192.168.20.136
- Port: 3001
- User Name: admin
- Password: •••••

At the bottom right, there are two buttons: 'Ok' and 'Cancel'.

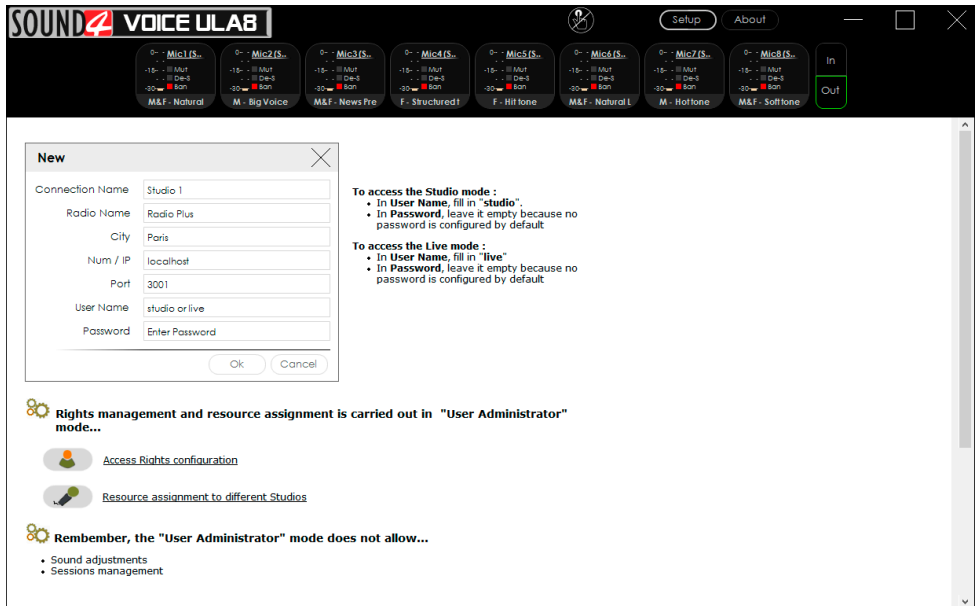
3. If you are not aware of SOUND4's IP address, it can be seen via the front panel. When the Main screen is on, press the soft button labeled [INFO]. Then using the [Up] and [Down] buttons navigate to IP (2/4) where the IP address of the device will be depicted.
4. Enter the required information. If not changed by the user, use the default value of the Port (3001). The username and password are as follows:
 - User name: **admin**
 - Password: **admin**
5. Press [OK]. A new device will be added. Double click on the newly added icon will open the control interface (**Step 3.3**).



STEP 3.3

Successful Log-in

A successful log-in in the system will open SOUND4 VOICE ULA main control window:



The screenshot shows the SOUND4 VOICE ULA main control window. At the top, there are several microphone input channels (Mic1 IS, Mic2 IS, Mic3 IS, Mic4 IS, Mic5 IS, Mic6 IS, Mic7 IS, Mic8 IS) with various settings like Mute, De-3, and EQ. Below the main window, a 'New' dialog box is open, allowing configuration of a new connection. The dialog box has the following fields:

- Connection Name: Studio 1
- Radio Name: Radio Plus
- City: Paris
- Num / IP: localhost
- Port: 3001
- User Name: studio or live
- Password: Enter Password

Buttons for 'Ok' and 'Cancel' are at the bottom of the dialog box. To the right of the dialog box, there are instructions:

To access the Studio mode :

- In **User Name**, fill in 'studio'
- In **Password**, leave it empty because no password is configured by default

To access the Live mode :

- In **User Name**, fill in 'live'
- In **Password**, leave it empty because no password is configured by default

Below the dialog box, there is a section titled 'Rights management and resource assignment is carried out in "User Administrator" mode...' with two sub-sections:

- [Access Rights configuration](#)
- [Resource assignment to different Studios](#)

Below that, there is a reminder: 'Remember, the "User Administrator" mode does not allow...' with two sub-points:

- Sound adjustments
- Sessions management

STEP 4

License Upload

There are two options of loading a new license/s. Both are explained in details below.

STEP 4.1

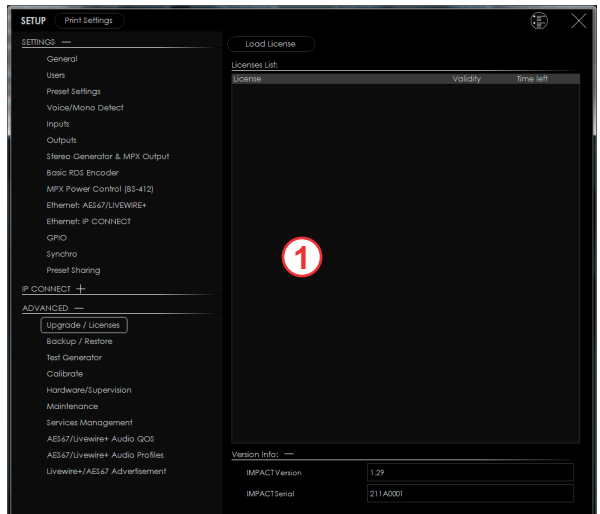
Expired License

If your license has expired, a warning message " Your main license has expired! Please contact SOUND4 for renew your main license" will appear on the screen

To upload a new license follow the steps listed below:

1. Press [OK]. The following screen will appear;
2. Press [License upload] and a new window requiring license file to be selected will open;
3. Go to the file directory, select the license and press [Open].

NOTE: All licenses are sent/provided in a ZIP file. It is not needed the file to be unzipped prior to their upload. They will be accepted by the program as they are.



The screenshot shows the SETUP window with the 'Print Settings' tab selected. The 'Load License' section is active, showing a table with columns for 'License', 'Validity', and 'Time left'. A red circle with the number '1' is overlaid on the 'License' column. Below the table, there is a 'Version info:' section with the following details:

IMPACT Version	1.29
IMPACT Serial	211A0001

- Wait until the licenses are loaded;
- Once the process is completed, a notification message will appear;
- Press [OK] and the Main control window will appear.

New

Connection Name: Studio 1

Radio Name: Radio Plus

City: Paris

Num / IP: localhost

Port: 3001

User Name: studio or live

Password: Enter Password

Ok Cancel

To access the Studio mode :

- In **User Name**, fill in "studio"
- In **Password**, leave it empty because no password is configured by default

To access the Live mode :

- In **User Name**, fill in "live"
- In **Password**, leave it empty because no password is configured by default

Rights management and resource assignment is carried out in "User Administrator" mode...

- Access Rights configuration
- Resource assignment to different Studios

Remember, the "User Administrator" mode does not allow...

- Sound adjustments
- Sessions management

STEP 4.2

NEW License

- Open the Main control window and click on [Setup]. The setup menu will appear;
- Scroll down with the cursor to the ADVANCED settings and press Upgrade Licenses. The Following window will appear:

SETUP Print Settings

SETTINGS —

- General
- Users
- Preset Settings
- Voice/Mono Detect
- Inputs
- Outputs
- Stereo Generator & MPX Output
- Basic RDS Encoder
- MPX Power Control (BS-412)
- Ethernet: AES67/LIVEWIRE
- Ethernet: IP CONNECT
- CPIC
- Synchro
- Preset Sharing
- IP CONNECT +
- ADVANCED —
- Upgrade / Licenses
- Backup / Restore
- Test Generator
- Calibrate
- Hardware/Supervision
- Maintenance
- Services Management
- AES67/Livewire+ Audio QOS
- AES67/Livewire+ Audio Profiles
- Livewire+/AES67 Advertisement

Load License

Licenses List:

License	Validity	Time left
Demo License - Option AES67	2018-03-31	12 days 10 hours
Demo License - Option Basic RDS	2018-03-31	12 days 10 hours
Demo License - Option Commercial Audio Player	2018-03-31	12 days 10 hours
Demo License - Option Emergency Audio Player	2018-03-31	12 days 10 hours
Demo License - Option Full RDS/UECP	2018-03-31	12 days 10 hours
Demo License - Option IP Connect IP TX1	2018-03-31	12 days 10 hours
Demo License - Option IP Connect IP TX2	2018-03-31	12 days 10 hours
Demo License - Option IP Connect RX1	2018-03-31	12 days 10 hours
Demo License - Option IP Connect RX2	2018-03-31	12 days 10 hours
Demo License - Option IP Connect Rx to Tx Pass-thru	2018-03-31	12 days 10 hours
Demo License - Option Livewire+	2018-03-31	12 days 10 hours
Demo License - Option Streaming Extension	2018-03-31	12 days 10 hours
Demo License - SOUND4 FIRST	2018-03-31	12 days 10 hours
Demo License - SOUND4 IMPACT	2018-03-31	12 days 10 hours
Demo License - SOUND4 PULSE	2018-03-31	12 days 10 hours
Demo License - URLPLAY	2018-03-31	12 days 10 hours

Version Info: —

IMPACT Version: 1.29

IMPACT Serial: 211 A0001

3. Press [Load Licenses];

4. Go to the file directory, select the license and press [Open].

NOTE: All licenses are sent/provided in a ZIP file. It is not needed the file to be unzipped prior to their upload. They will be accepted by the program as they are.

5. Wait while the licenses are loaded;

6. Once the process is completed, press [OK] and close the Setup window so that the Main control can appear.

STEP 5

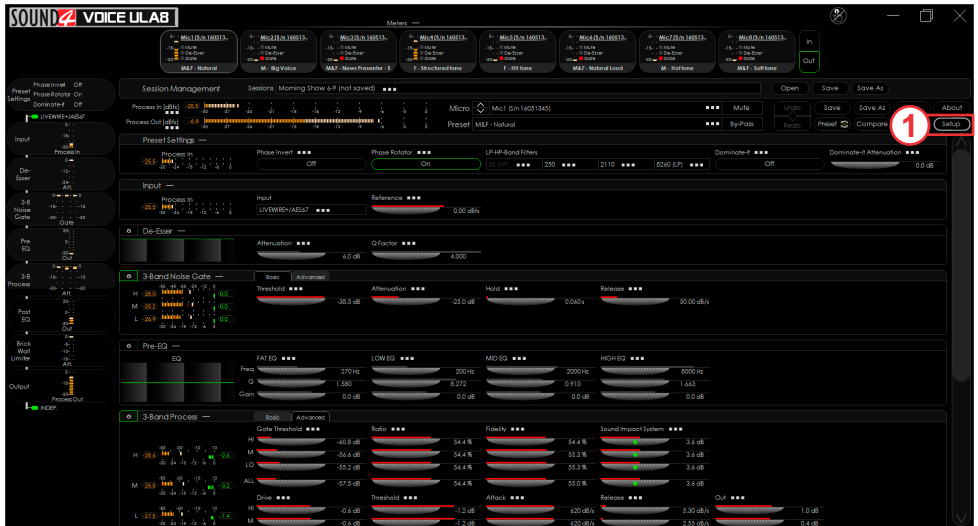
Device Basic Set-up

If not already done that, connect the network cable to the device in order for it to be properly integrated into your existing network.

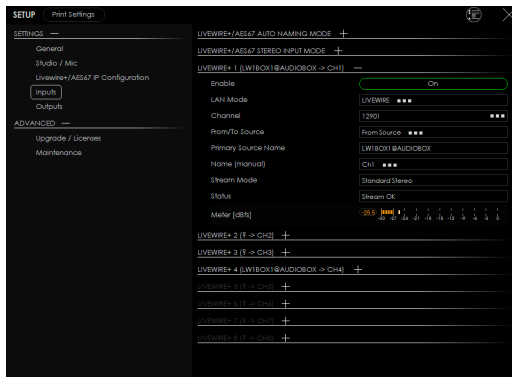
STEP 5.1

Inputs and Outputs Set-up

The basic set-up of the inputs and outputs can be easily made via Inputs and Outputs section of the Setup menu, in the Studio mode. Please use default login: **studio** without password to enter the Studio control mode.



Then press [Setup] button (1) to enter settings menu.



The set-up process is different for each parameter, but quite simplified and explained in details below:

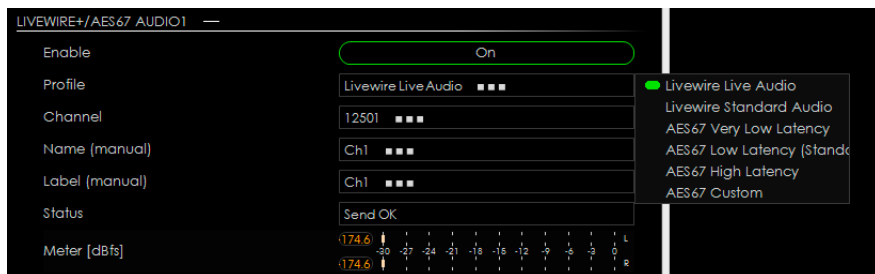
LIVEWIRE+/AES67 Inputs Set-up

1. Click on the audio inputs section;
2. Enable the input by selecting [ON] with a click;
3. Select LAN mode by clicking on [LIVEWIRE ...];
4. Define number of the Channel;
5. Select From/To Source mode;
6. Define the Name manually if necessary.



Livewire+/AES67 Outputs Set-up

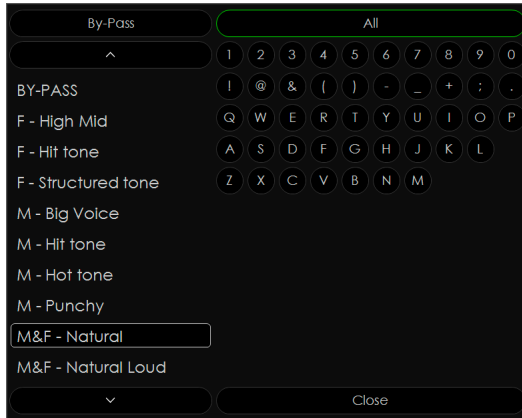
1. Click on the name of the desired Output;
 2. The respective set-up window will appear. Apply the desired settings and press [X]. The changes will be automatically saved.
- Enable the input by selecting [ON] with a click;
 - Select LAN streaming profile mode;
 - Define number of Channel;
 - Define Name and the Label.



STEP 5.2

Presets Selection

In the Studio control window select the channel, and select a preset, by pressing [Preset] button (1), and list of all presets will appear on the screen.



Double click on the desired preset will load it automatically into current channel of the device.

Thank you for choosing SOUND4!
If you need any assistance on our side, please visit: www.sound4.com